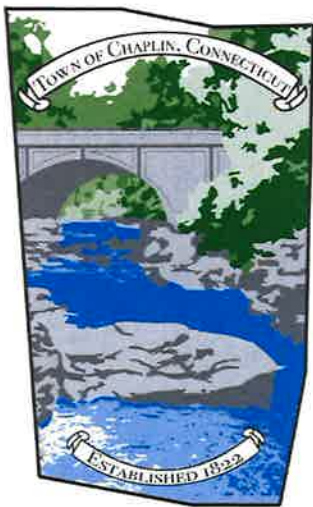
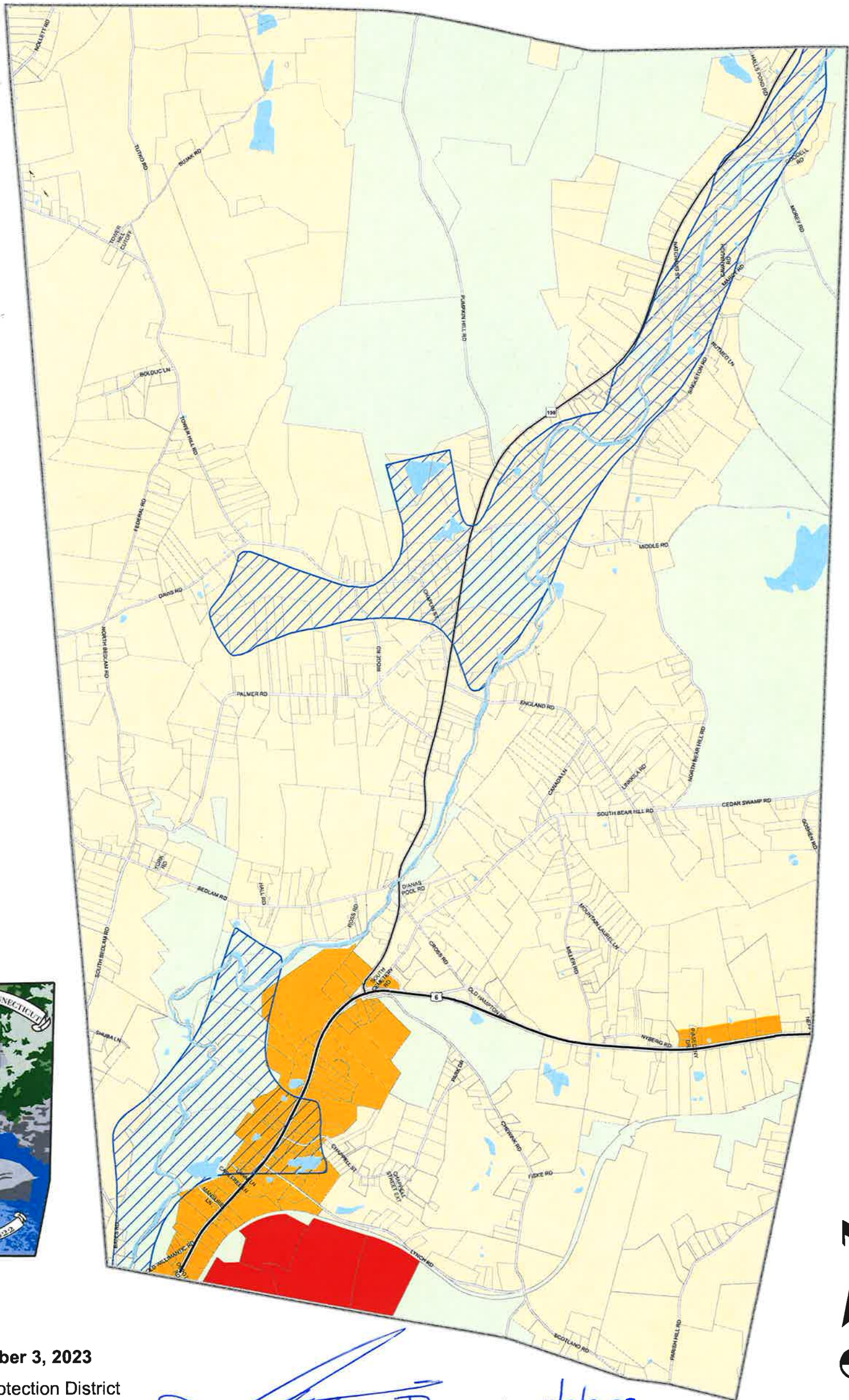


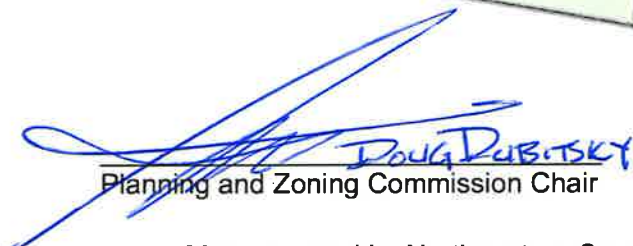
# Chaplin Zoning Map



## Use Districts

Effective November 3, 2023

-  Aquifer Protection District
-  Business District
-  Industry District
-  Rural Agricultural Residence District
-  State and Federal Land

  
 Planning and Zoning Commission Chair

11/2/2023  
 Date

Map prepared by Northeastern Connecticut  
 Council of Governments  
 Parcels generated by CAI Technologies, 2022.

